



TEST REPORT

Applicant	Suzhou Pineapple Health Technology Co., Ltd.
Address	Room 311, House B, CaoHu Science Park West Jiaotong, No.1, Kwun Tang Road, Xiangcheng Economic Development Zone, Suzhou, Jiangsu, China
Manufacturer	Suzhou Pineapple Health Technology Co., Ltd.
Address	Room 311, House B, CaoHu Science Park West Jiaotong, No.1, Kwun Tang Road, Xiangcheng Economic Development Zone, Suzhou, Jiangsu, China
Product Name:	MASSAGE GUN
Trade Mark:	菠萝君 (Booster boluojun)
Model Number:	BOOSTER M2-B BOOSTER M2-A, BOOSTER M2-C
Prepared By:	Shenzhen DL Testing Technology Co., Ltd.
Address:	101-201, Building C, Shuanghuan, No.8, Baoqing Road, Baolong Industrial Zone, Baolong Street, Longgang District, Shenzhen, Guangdong, China
Test Date:	Jan. 27, 2021 - Feb. 03, 2021
Date of Report:	Feb. 03, 2021
Report No.:	DL-20210203032R
Test Standard	IEC62321-1: 2013; IEC62321-3-1:2013; IEC62321-4:2013+A1:2017; IEC62321-5:2013; IEC62321-6:2015; IEC62321-7-1:2015 IEC62321-7-2:2017; IEC62321-8:2017
Comment	Based on the performed tests on submitted samples, the results of Pb, Cd, Hg, Cr(VI), PBBs, PBDEs, DBP, BBP, DEHP, DIBP comply with the limits as set by EU RoHS Directive 2011/65/EU and its amendment Directive EU 2015/863.

Prepared (Engineer): Alisa Song

Approved (Manager): Jade Yang



This test report is based on a single evaluation of one sample of above mentioned products. It is not permitted to be duplicated in extracts without written approval of Shenzhen DL Testing Technology Co., Ltd.



1. VERSION

Version No.	Date	Description
00	Feb. 03, 2021	Original

Tested Item and Limit:

List of Analytes and their Corresponding Test Methods, Detection Limit and Maximum Allowable Limit [for European Council Directive 2011/65/EU and its amendment Directive EU 2015/863]

Name of Analytes	Detection Limit (mg/kg)				Maximum Allowable Limit (mg/kg)
	X-ray fluorescence (XRF)			Wet Chemistry	
	Plastic	Metallic / glass / ceramic	Others		
Lead (Pb)	100	200	200	10	1000
Cadmium (Cd)	50	50	50	10	100
Mercury (Hg)	100	200	200	10	1000
Chromium (Cr)	100	200	200	NA	NA
Chromium VI (Cr VI)	NA	NA	NA	10	1000 / Negative
Bromine (Br)	200	NA	200	NA	NA
Polybromobiphenyls (PBBs) - Bromobiphenyl (MonoBB) - Dibromobiphenyl (DiBB) - Tribromobiphenyl (TriBB) - Tetrabromobiphenyl (TetraBB) - Pentabromobiphenyl (PentaBB) - Hexabromobiphenyl (HexaBB) - Heptabromobiphenyl (HeptaBB) - Octabromobiphenyl (OctaBB) - Nonabromobiphenyl (NonaBB) - Decabromobiphenyl (DecaBB)	NA	NA	NA	Each 50	Sum 1000
Polybromodiphenyl ethers (PBDEs) - Bromodiphenyl ether (MonoBDE) - Dibromodiphenyl ether (DiBDE) - Tribromodiphenyl ether (TriBDE) - Tetrabromodiphenyl ether (TetraBDE) - Pentabromodiphenyl ether (PentaBDE) - Hexabromodiphenyl ether (HexaBDE) - Heptabromodiphenyl ether (HeptaBDE) - Octabromodiphenyl ether (OctaBDE) - Nonabromodiphenyl ether (NonaBDE)	NA	NA	NA	Each 50	Sum 1000

**List of Analytes and their Corresponding Test Methods, Detection Limit and Maximum Allowable Limit [for European Council Directive 2011/65/EU and its amendment Directive EU 2015/863]**

Name of Analytes	Detection Limit (mg/kg)				Maximum Allowable Limit (mg/kg)
	X-ray fluorescence (XRF)			Wet Chemistry	
	Plastic	Metallic / glass / ceramic	Others		
- Decabromodiphenyl ether (DecaBDE)					
Dibutyl phthalate (DBP) Di-(2-ethyl hexyl) phthalate (DEHP) Benzyl butyl phthalate (BBP) Di-(iso-butyl) phthalate (DIBP)	NA	NA	NA	Each 50	Each 1000

**Tested Sample/Part Description:**

Test Item(s)	Component Description(s)	Style
1.	Blue plastic	-
2.	Black plastic	-
3.	Motor	-
4.	Black plastic	-
5.	Black silicone	-
6.	Blue plastic	-
7.	Black plastic	-
8.	Black plastic	-
9.	Black silicone	-
10.	Black silicone	-
11.	White silicone	-
12.	Silver screw	-
13.	Silver screw	-
14.	Blue screw	-
15.	Silvery metal	-
16.	Black plastic	-
17.	Black tape	-
18.	Internal wire	-
19.	White glue	-
20.	White socket	-
21.	White socket	-
22.	Silver Tin	-
23.	Green PCB	-
24.	Silver screw	-
25.	Green PCB	-
26.	Resistance	-
27.	Silvery metal	-
28.	LED lights	-
29.	Black Triode	-
30.	White socket	-
31.	White socket	-
32.	IC	-
33.	IC	-
34.	Black diode	-
35.	Resistance	-
36.	Capacitance	-
37.	IC	-
38.	Screen	-
39.	Silver metal socket	-



Test Item(s)	Component Description(s)	Style
40.	Silver metal buttons	-
41.	Black diode	-
42.	Battery	-
43.	Charging adapter	-
44.	Black silicone	-
45.	Black sponge	-
46.	Black plastic	-



Test Results

Test Item(s)	Test Partner mg/kg										Conclusion
	Pb	Cd	Hg	Cr VI	PBBs	PBDEs	DBP	DEHP	BBP	DIBP	
1	N.D.	N.D.	N.D.	N.D.	N.D.	N.D.	N.D.	N.D.	N.D.	N.D.	PASS
2	N.D.	N.D.	N.D.	N.D.	N.D.	N.D.	N.D.	N.D.	N.D.	N.D.	PASS
3	N.D.	N.D.	N.D.	N.D.	N.D.	N.D.	N.D.	N.D.	N.D.	N.D.	PASS
4	N.D.	N.D.	N.D.	N.D.	N.D.	N.D.	N.D.	N.D.	N.D.	N.D.	PASS
5	N.D.	N.D.	N.D.	N.D.	N.D.	N.D.	N.D.	N.D.	N.D.	N.D.	PASS
6	N.D.	N.D.	N.D.	N.D.	N.D.	N.D.	N.D.	N.D.	N.D.	N.D.	PASS
7	N.D.	N.D.	N.D.	N.D.	N.D.	N.D.	N.D.	N.D.	N.D.	N.D.	PASS
8	N.D.	N.D.	N.D.	N.D.	N.D.	N.D.	N.D.	N.D.	N.D.	N.D.	PASS
9	N.D.	N.D.	N.D.	N.D.	N.D.	N.D.	N.D.	N.D.	N.D.	N.D.	PASS
10	N.D.	N.D.	N.D.	N.D.	N.D.	N.D.	N.D.	N.D.	N.D.	N.D.	PASS
11	N.D.	N.D.	N.D.	N.D.	N.D.	N.D.	N.D.	N.D.	N.D.	N.D.	PASS
12	N.D.	N.D.	N.D.	N.D.	N.D.	N.D.	N.D.	N.D.	N.D.	N.D.	PASS
13	N.D.	N.D.	N.D.	N.D.	N.D.	N.D.	N.D.	N.D.	N.D.	N.D.	PASS
14	N.D.	N.D.	N.D.	N.D.	N.D.	N.D.	N.D.	N.D.	N.D.	N.D.	PASS
15	N.D.	N.D.	N.D.	N.D.	N.D.	N.D.	N.D.	N.D.	N.D.	N.D.	PASS
16	N.D.	N.D.	N.D.	N.D.	N.D.	N.D.	N.D.	N.D.	N.D.	N.D.	PASS
17	N.D.	N.D.	N.D.	N.D.	N.D.	N.D.	N.D.	N.D.	N.D.	N.D.	PASS
18	N.D.	N.D.	N.D.	N.D.	N.D.	N.D.	N.D.	N.D.	N.D.	N.D.	PASS
19	N.D.	N.D.	N.D.	N.D.	N.D.	N.D.	N.D.	N.D.	N.D.	N.D.	PASS
20	N.D.	N.D.	N.D.	N.D.	N.D.	N.D.	N.D.	N.D.	N.D.	N.D.	PASS
21	N.D.	N.D.	N.D.	N.D.	N.D.	N.D.	N.D.	N.D.	N.D.	N.D.	PASS
22	N.D.	N.D.	N.D.	N.D.	N.D.	N.D.	N.D.	N.D.	N.D.	N.D.	PASS
23	N.D.	N.D.	N.D.	N.D.	N.D.	155	N.D.	N.D.	N.D.	N.D.	PASS
24	N.D.	N.D.	N.D.	N.D.	N.D.	N.D.	N.D.	N.D.	N.D.	N.D.	PASS
25	N.D.	N.D.	N.D.	N.D.	N.D.	155	N.D.	N.D.	N.D.	N.D.	PASS



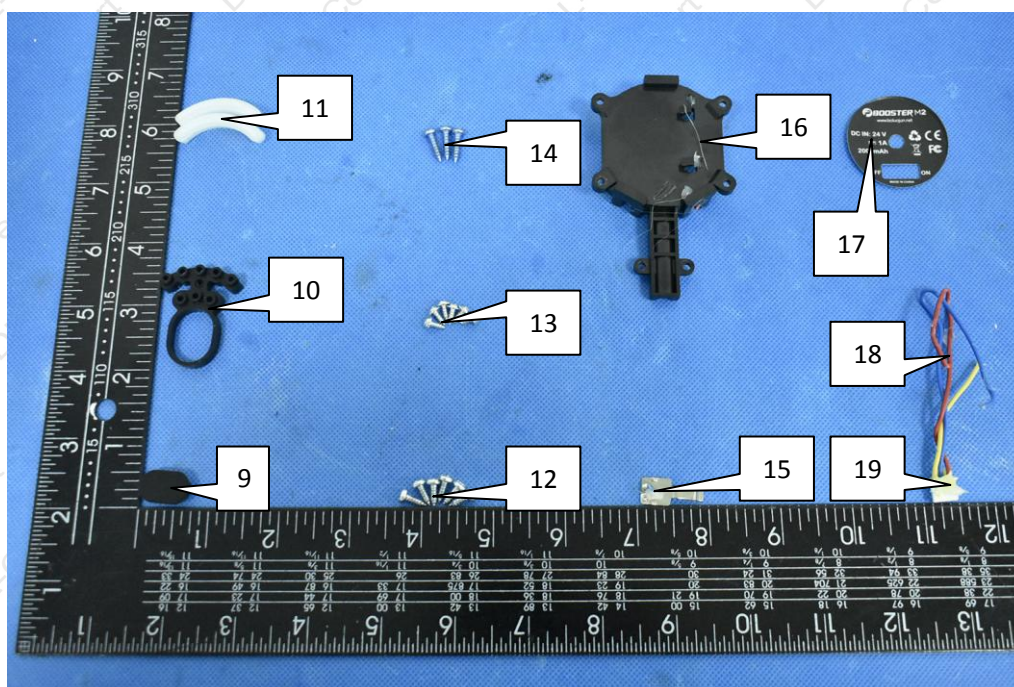
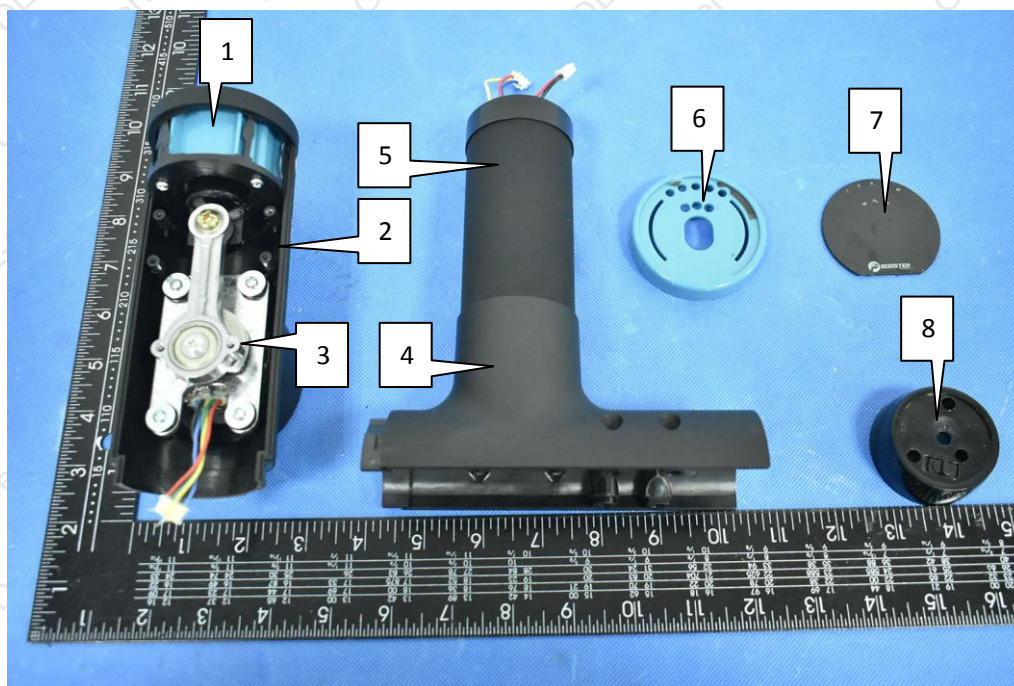
Test Item(s)	Test Partner mg/kg										Conclusion
	Pb	Cd	Hg	Cr VI	PBBs	PBDEs	DBP	DEHP	BBP	DIBP	
26	N.D.	N.D.	N.D.	N.D.	N.D.	N.D.	N.D.	N.D.	N.D.	N.D.	PASS
27	N.D.	N.D.	N.D.	N.D.	N.D.	N.D.	N.D.	N.D.	N.D.	N.D.	PASS
28	N.D.	N.D.	N.D.	N.D.	N.D.	N.D.	N.D.	N.D.	N.D.	N.D.	PASS
29	N.D.	N.D.	N.D.	N.D.	N.D.	N.D.	N.D.	N.D.	N.D.	N.D.	PASS
30	N.D.	N.D.	N.D.	N.D.	N.D.	N.D.	N.D.	N.D.	N.D.	N.D.	PASS
31	N.D.	N.D.	N.D.	N.D.	N.D.	N.D.	N.D.	N.D.	N.D.	N.D.	PASS
32	N.D.	N.D.	N.D.	N.D.	N.D.	N.D.	N.D.	N.D.	N.D.	N.D.	PASS
33	N.D.	N.D.	N.D.	N.D.	N.D.	N.D.	N.D.	N.D.	N.D.	N.D.	PASS
34	N.D.	N.D.	N.D.	N.D.	N.D.	N.D.	N.D.	N.D.	N.D.	N.D.	PASS
35	N.D.	N.D.	N.D.	N.D.	N.D.	N.D.	N.D.	N.D.	N.D.	N.D.	PASS
36	N.D.	N.D.	N.D.	N.D.	N.D.	N.D.	N.D.	N.D.	N.D.	N.D.	PASS
37	N.D.	N.D.	N.D.	N.D.	N.D.	N.D.	N.D.	N.D.	N.D.	N.D.	PASS
38	N.D.	N.D.	N.D.	N.D.	N.D.	N.D.	N.D.	N.D.	N.D.	N.D.	PASS
39	N.D.	N.D.	N.D.	N.D.	N.D.	N.D.	N.D.	N.D.	N.D.	N.D.	PASS
40	N.D.	N.D.	N.D.	N.D.	N.D.	N.D.	N.D.	N.D.	N.D.	N.D.	PASS
41	N.D.	N.D.	N.D.	N.D.	N.D.	N.D.	N.D.	N.D.	N.D.	N.D.	PASS
42	N.D.	N.D.	N.D.	N.D.	N.D.	N.D.	N.D.	N.D.	N.D.	N.D.	PASS
43	N.D.	N.D.	N.D.	N.D.	N.D.	N.D.	N.D.	N.D.	N.D.	N.D.	PASS
44	N.D.	N.D.	N.D.	N.D.	N.D.	N.D.	N.D.	N.D.	N.D.	N.D.	PASS
45	N.D.	N.D.	N.D.	N.D.	N.D.	N.D.	N.D.	N.D.	N.D.	N.D.	PASS
46	N.D.	N.D.	N.D.	N.D.	N.D.	N.D.	N.D.	N.D.	N.D.	N.D.	PASS

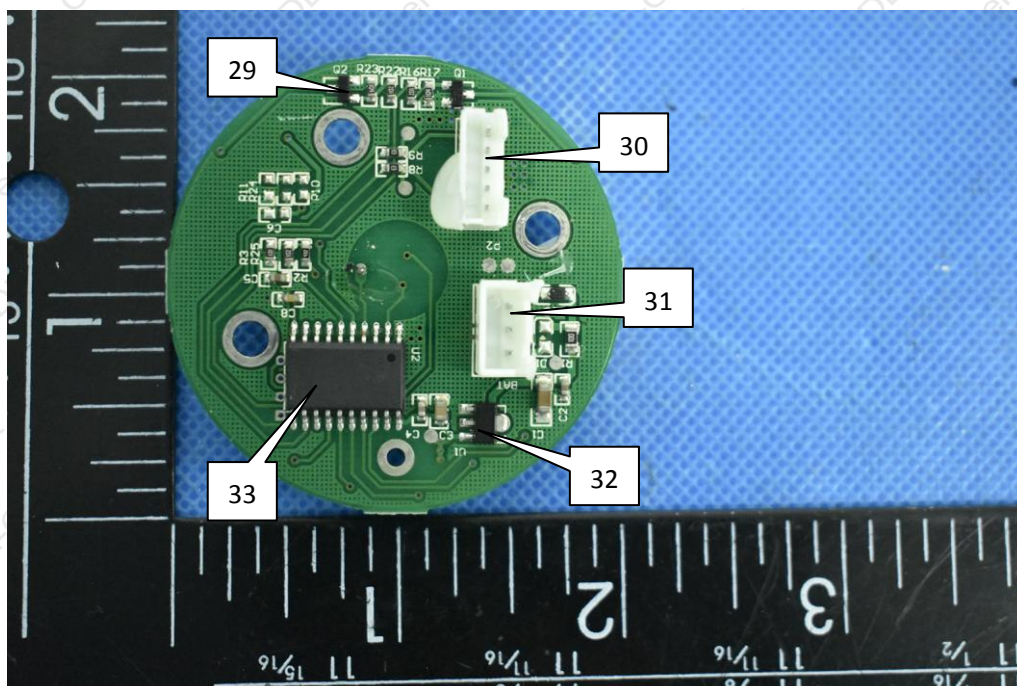
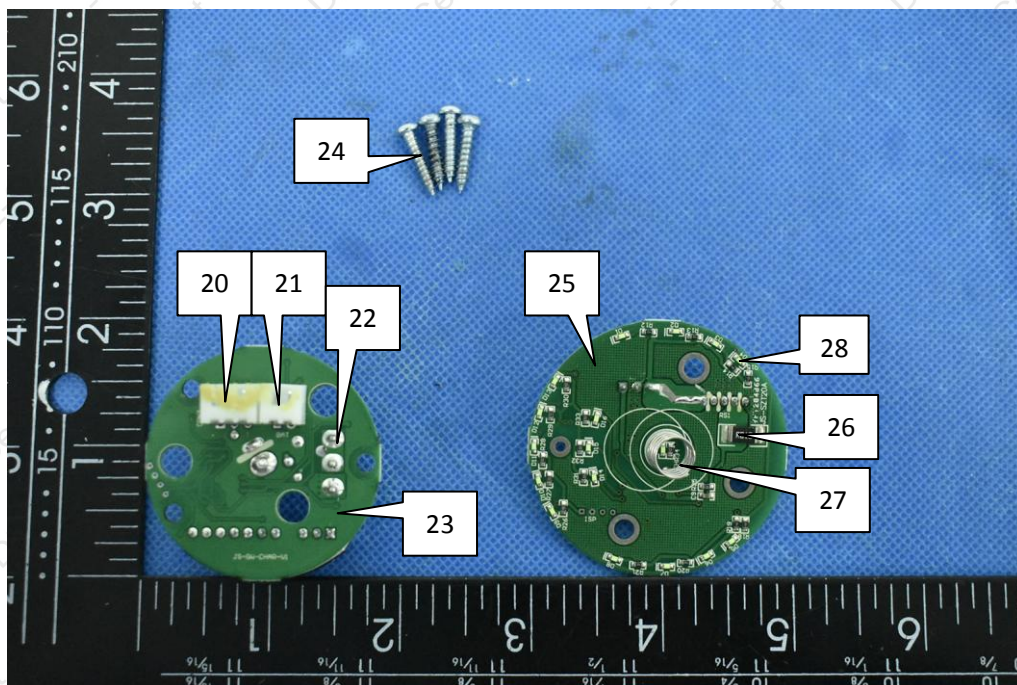
NOTE:

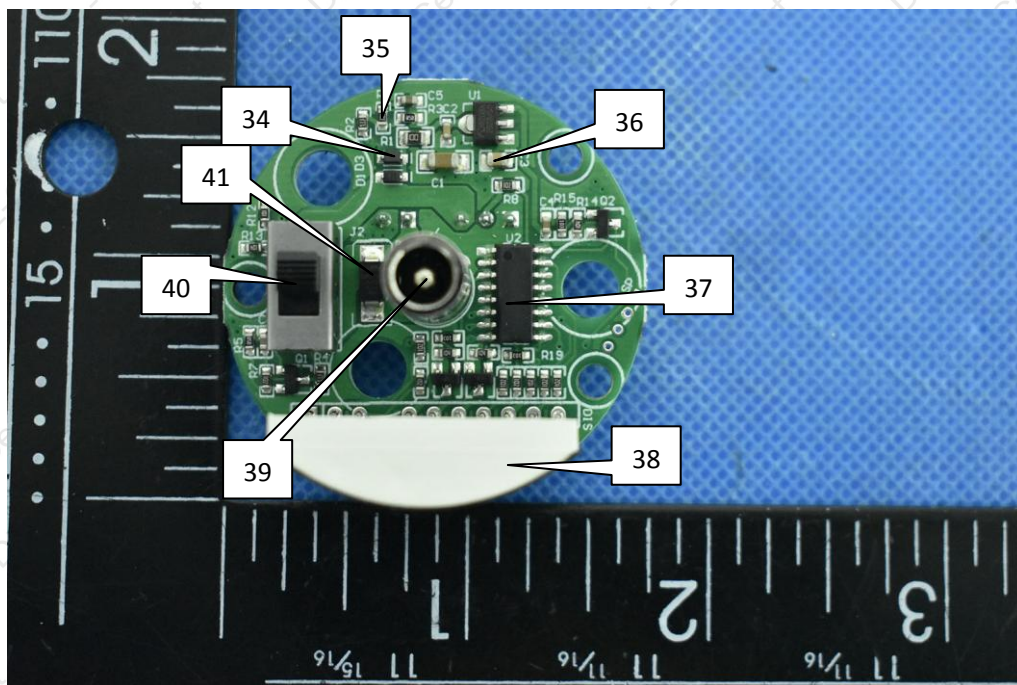
- (1) mg/kg = ppm=parts per million
- (2) N.D. = not detected (<MDL)
- (3) MDL=Method Detection Limit
- (4) “—”=Not regulated

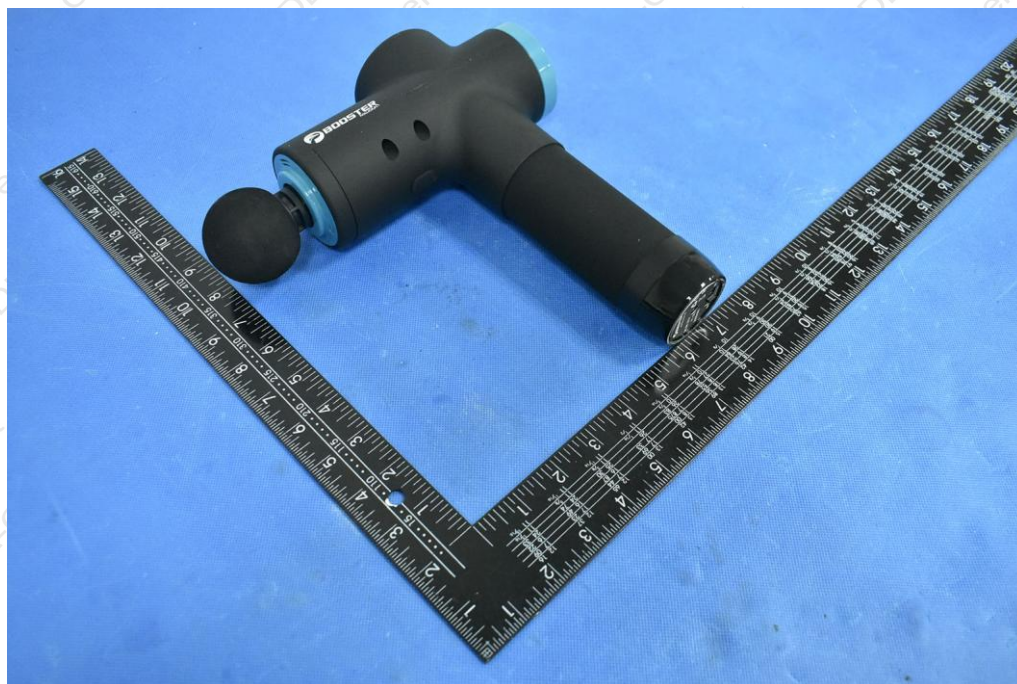


EUT PHOTOGRAPHS











***** END OF REPORT *****